

# NexSun Juniper

## Rechargeable Solar Powered LED Flood Light

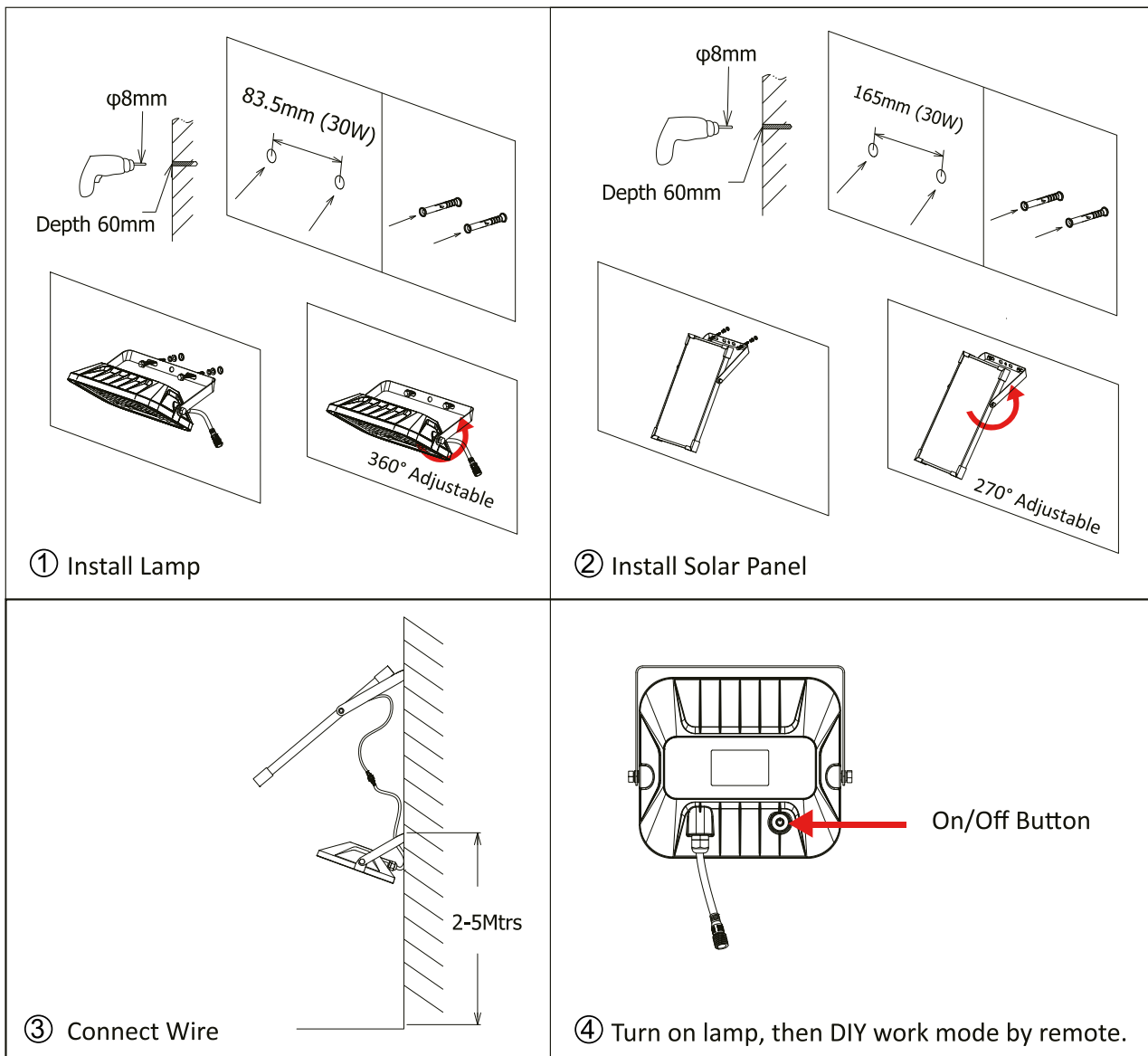


Supplied with:  
 1 x Floodlight  
 1 x Solar panel  
 1 x Remote control  
 4 x Screws

### Installation

Prepare the lamp, accessories and tools well, confirm the installation location and wire length.

1. Drill 2 holes of  $\Phi 8\text{mm}$  with a depth of 60mm on the wall, fix the lamp on the wall with expansion plugs and screws.
2. Drill 2 holes of  $\Phi 8\text{mm}$  with a depth of 60mm on the wall, fix the solar panel on the wall with expansions plugs and screws.
3. Connect the wire of the solar panel to the lamp and screw it tightly.
4. Press the button on the lamp to activate the remote control, then use remote control to set desired working mode.



On/Off Button

### Operating the solar floodlight

Firstly, please press the button on the lamp, lamp turns on and automatically enter keep lighting mode (Default Mode). Press the button again, lamp turns off. When the lamp is turned off by pressing the button on lamp, the lamp has no memory. At the same time, the remote control does not work.

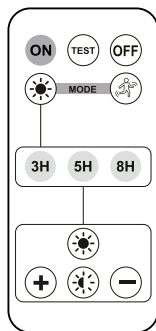
## Indicator Light

This lamp has a RGB indicator light, which shows the charging state of the lamp.

Indicator light status during the day	Working status of solar lamp
Green light is always on.	Lamp is fully charged.
Blue light is flashing.	Solar panel is charging normally.
Indicator light is off.	The current ambient sunlight is too weak to charge lamp.

Indicator light status at night	Working status of solar lamp
Indicator light is off.	Lamp discharges and lighting on.
Red light is flashing.	Lamp discharges and lighting on, battery power is low.

## Remote Control



- \* Please remove the insulating film of the remote control before use.
- \* The remote control can be only workable after the lamp is turned on by pressing the button on the lamp.
- \* Remote control distance: 6 meters.
- \* Each time you press a button on the remote, the lamp flashes once.  
When the brightness is adjusted to maximum or minimum the lamp will no longer flash.
- \* ON/OFF switch on the remote control has memory function.

→ Remove the film before use.

	Press <b>ON</b> , lamp turns on.	
	Press <b>OFF</b> , lamp turns off.	
	Press and hold <b>TEST</b> for 5 seconds to enter the Test Mode, lamp is on at 100% brightness of current power state for 10 minutes, then automatically switch to the latest operation set before.	
	Press , lamp enters Sensor Mode as above. * Neither lighting time nor brightness can be adjusted under Sensor Mode. * If press lighting time keys under Sensor Mode, lamp will switch to Constant Light Mode.	
	Press , lamp enters default Constant Light Mode as above.	
Lighting Time	These 7 keys (in gray background) are only used to adjust lighting time and brightness under Constant Light Mode. You can press the time and brightness keys in no order.  <b>For example:</b> Press  +  + <b>5H</b> , lamp works as below: Lamp lights up at night and keep 45% brightness for 5Hrs, after which lamp turns to Sensor Mode.	
		60% Brightness
		30% Brightness
		+15% Brightness by each press (Max 60% brightness)
		-15% brightness by each press (Min 15% brightness)

**NexSun** NexSun is a brand of NightSearcher Ltd.

NightSearcher Limited, Unit 4 Applied House, Fitzherbert Spur, Farlington, Portsmouth, Hampshire, PO6 1TT, UK

T: +44 (0)23 9238 9774 E: sales@nightsearcher.co.uk

If at any time, you need to dispose of this product or parts of this product: please note that waste electrical products and batteries should not be disposed of with ordinary household waste. Recycle where facilities exist. Check with your local authority for recycling advice. Alternatively, NightSearcher is happy to take receipt of this product at end-of-life and will recycle it on your behalf.

All NexSun products have a 3 year standard warranty on all manufacturing defects and 1 years on rechargeable batteries from the date of purchase. Please visit [www.nexsun.co.uk](http://www.nexsun.co.uk) for warranty information, proof of purchase is required.

Product weight	1.84kg
Product size	Floodlight: 200X191X49mm   Solar Panel: 375x255X21.5mm
NS Part No.	NEXSUN-JUNIPER

